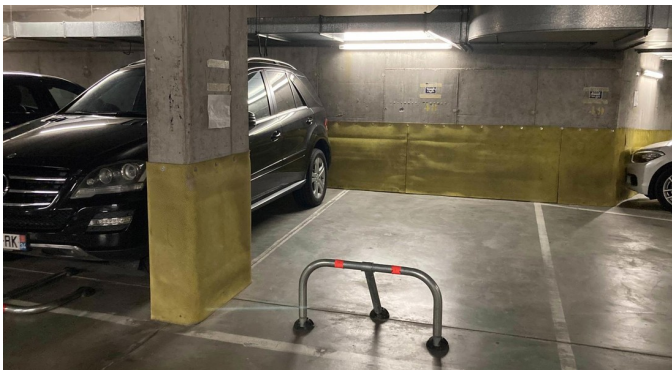
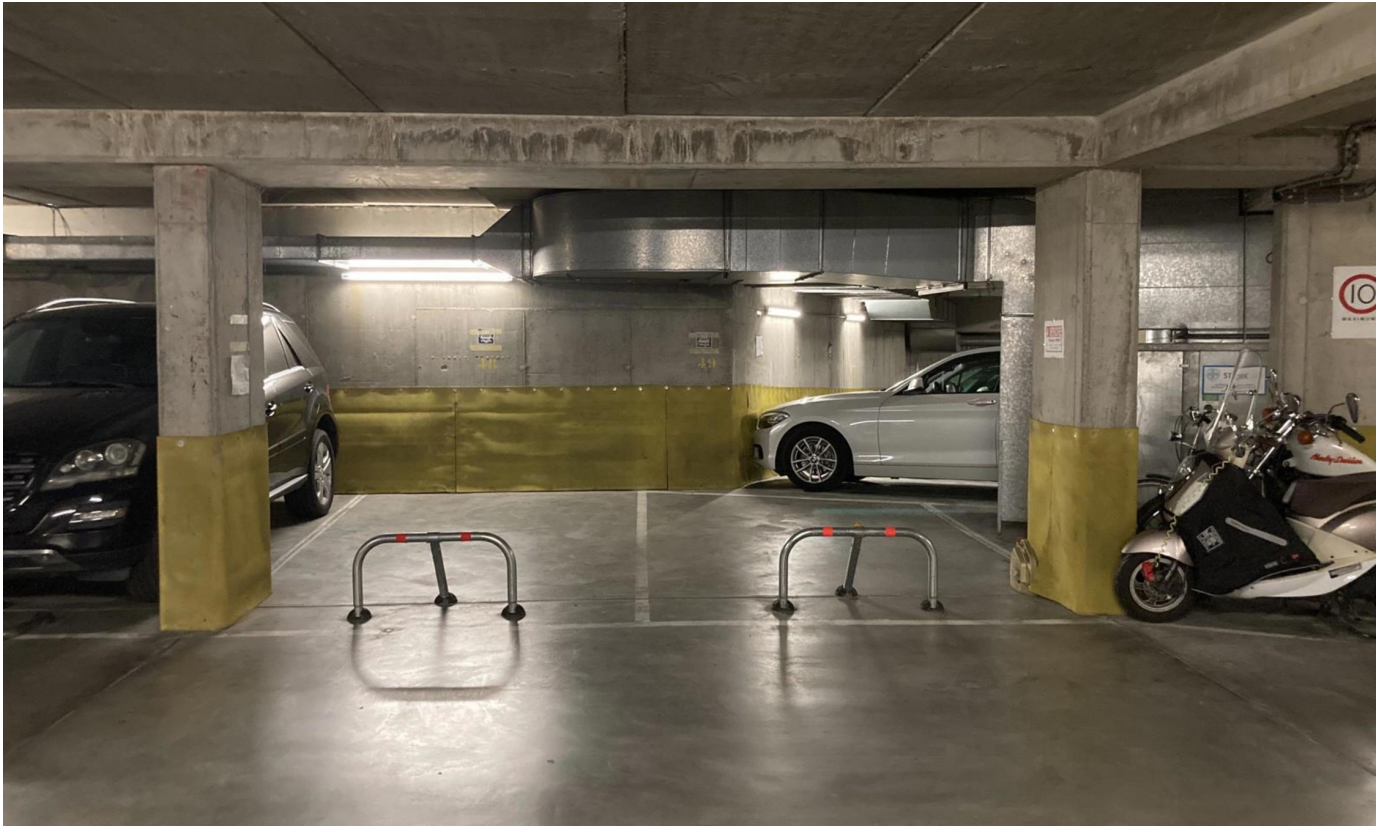


## Inside parking for sale

Avenue Jean Monnet 2-12 1200 Woluwe-Saint-Lambert

**€ 18.000**



# Description

CORA area - In a building complex located Avenue de Calabre and Jean Monnet, a parking space with a depth of +/-5m and width of +/-2.40m, secured with a folding parking barrier - Electric access door to the basement - Possibility of buying 4 spaces in this car park.

---

## Details

### General information

Construction year

**1994**

State

**Good state**

Garage

**Yes**

Parking inside

**Yes**

Parkings inside

**2**

### In the proximity

Shops nearby

**Yes**

School nearby

**Yes**

Public transport nearby

**Yes**

### Financial

Price

**€ 18.000**

Land registry income

**€ 141**

VAT applied

**No**

Reference

**Monnet 2 - Emplacement de parking**

Available

**At the contract**

**01 January 2023**

---

### Spatial planning

Destination

**Not disclosed**

Building permission

**Not disclosed**

Intimation

**Not disclosed**

Parcelling permission

**Not disclosed**

Right of pre-emption

**Not disclosed**