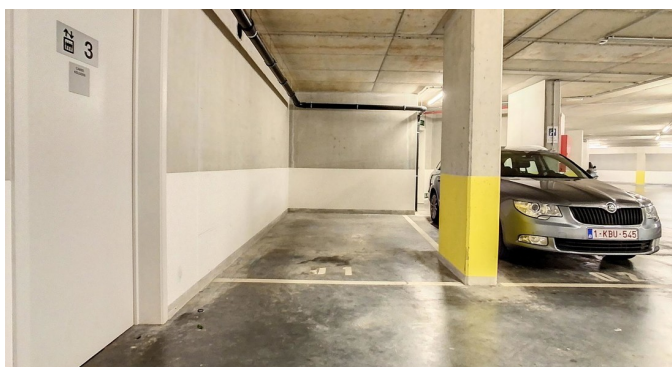
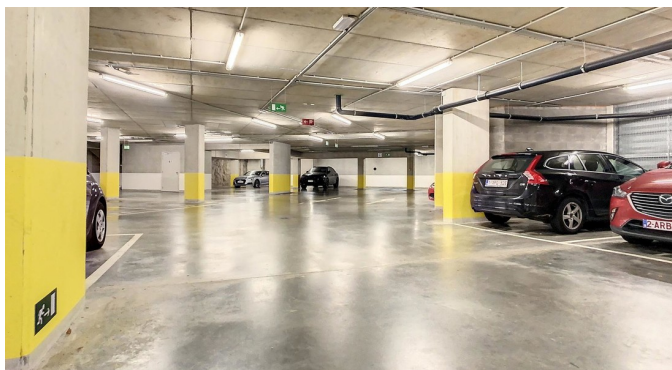


Inside parking for rent

Van Maerlantstraat 7 1000 Brussels

€ 125

🏠 10 m²



Description

EUROPEAN QUARTER/SCHUMAN/JOURDAN - In a building complex located Rue Maerlant and Rue Belliard, 1 parking space with a depth of +/-4m and width of +/-2.40m in a secured parking - Electric access door to the basement.

Details

General information	In the proximity	Financial
Construction year 2013	Shops at 100 m	Price € 125 per month
State Good state	Public transport at 200 m	VAT applied No
Floor -2	Public transport nearby Yes	Reference Maerlant 7 - Emplacement de parking
Garage Yes		Available 01 April 2025
Parking inside Yes	Dimensions	
Parkings inside 1	Habitable surface 10 m²	