


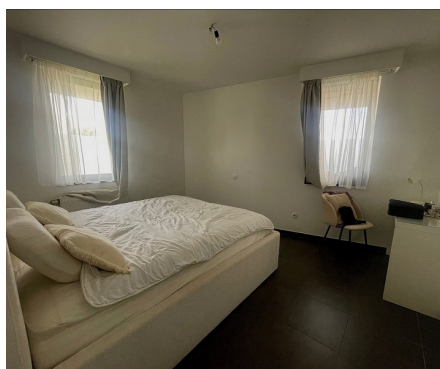


Ground floor with garden for rent

Kapellelaan 383 2 1860 Meise

€ 1.350

 2  1  90 m²



Description

Ground-floor apartment with a beautiful large garden located in a small co-owned property. The apartment comprises an entrance hall, toilet, bright living room of +/- 30m² with an open-plan kitchen and a south-facing terrace of +/- 31m² with a beautiful view of the fields, two bedrooms of +/- 13m² and +/- 12m², a utility room with connections for a washing machine and dryer, and a bathroom with a shower, bathtub, and toilet. Individual gas heating (condensing), bicycle storage, and parking space. Provision for monthly charges: €115/month (common areas). Not to be missed!

Details

General information

Construction year
2005

State
Good state

Garden
Yes

Terraces
1

Terrace 1
south-east

Parkings outside
1

Layout

Living room
30 m²

Kitchen
US hyper equipped

Bedroom 1
13 m²

Bedroom 2
12 m²

Bathroom
all comfort

Toilets
2

Laundry
Yes

In the proximity

Environment
Central

Shops nearby
Yes

School nearby
Yes

Public transport nearby
Yes

Dimensions

Habitable surface
90 m²

Comfort

Handicap friendly
No

Elevator
No

Pool
No

Energy

EPC
123 kWh/m²

Electricity certificate
Yes, conform

Heating type
Gas

Heating
Individual

Financial

Price
€ 1.350 per month

Costs
€ 115 monthly

Reference
Kapelle 383/2

Available
01 October 2025