


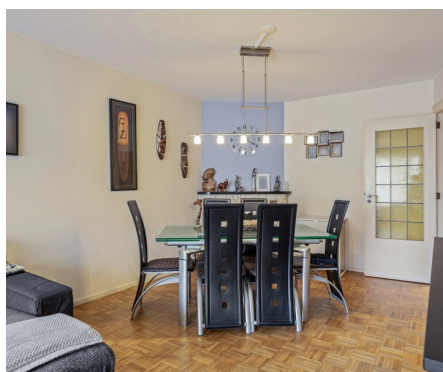


## Flat for sale

Henry Dunant 4 27 1140 Evere

**€ 235.000**

 2  1  80 m<sup>2</sup>



# Description

Close to public transport and shops, beautiful bright apartment of ± 80m² with open views on the 2nd floor of a building with elevator - The apartment consists of an entrance hall with cloakroom and toilet, bright living room giving access to the terrace, separate semi-equipped kitchen, night hall, 2 bedrooms (±13m², 11m²) with access to a 2nd terrace, bathroom and cellar in the basement. Parking space extra (€30,000). Common charges +/-250€ (heating and water included) + 65€ reserve fund - To be seen without delay!

## Details

### General information

Construction year  
**1965**

State  
**Good state**

Floor  
**2**

Floors  
**8**

Terraces  
**2**

Garage  
**Yes**

Parking inside  
**Yes**

Parkings inside  
**1**

### Layout

Living room  
**28 m²**

Kitchen  
**8 m² (semi fitted)**

Bedroom 1  
**13 m²**

Bedroom 2  
**11 m²**

Bathroom  
**shower in bath**

Toilets  
**1**

Cellar  
**Yes**

### In the proximity

Environment  
**Free sight**

Shops at  
**50 m**

School nearby  
**Yes**

Public transport at  
**5 m**

**5.000 m**

### Dimensions

Habitable surface  
**80 m²**

### Comfort

Handicap friendly  
**Yes**

Elevator  
**Yes**

Pool  
**No**

### Energy

EPC  
**87 kWh/m²**

CO2 emission  
**21kg CO2/m²**

Electricity certificate  
**Yes, not conform**

Heating type  
**Gas (centr. heat.)**

### Financial

Price  
**€ 235.000**

Reference  
**Dunant 4/27**

Available  
**Tbd with the tenant**

**01 August 2024**

### Spatial planning

Destination  
**Not disclosed**

Building permission  
**Not disclosed**

Intimation  
**Not disclosed**

Parcelling permission  
**Not disclosed**

Right of pre-emption  
**Not disclosed**

Flooding area  
**Not located in flood area**