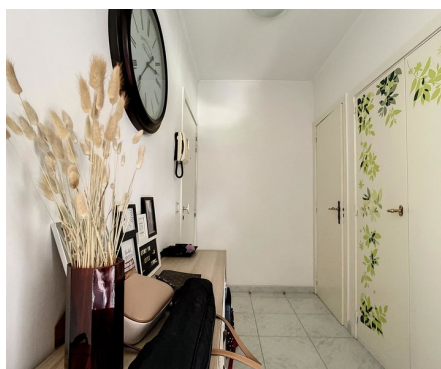


Flat for rent

In de Poort 26 12 1970 Wezembeek-Oppem

€ 1.150

 2  1  100 m²  14 m²



Description

Very cosy apartment, ideally located in a green and calm residential area close to public transport (metro Kraainem - tram 39), international schools (American, European and German school) with a surface of +/-100m2. The apartment is composed of an entrance with toilet and built-in closet, a very bright living-room de +/-35m2 with access to a nice terrace south-west facing, a fully equipped kitchen with separate laundry area, 2 bedrooms (+/- 22m2, +/-14m2), bathroom with bathtub/shower, toilet. Cellar, 1 parking space in the building included in the price. Provision for monthly charges: 130€. Not to be missed! Free the 01/04/2026.

Details

General information

Construction year
1991

State
Very good state

Type of construction
Semi detached

Floor
1

Floors
3

Terrace 1
14 m²

Garage
Yes

Parking inside
Yes

Parkings inside
1

Layout

Kitchen
Hyper equipped

Bedroom 1
22 m²

Bedroom 2
14 m²

Toilets
2

In the proximity

Environment
Quiet

Dimensions

Habitable surface
100 m²

Comfort

Handicap friendly
No

Elevator
Yes

Pool
No

Energy

Heating type
Electrical accumulators

Financial

Price
€ 1.150 per month

Costs
€ 130 monthly

Reference
In de Poort 26/12

Available
Tbd with the tenant
01 April 2026