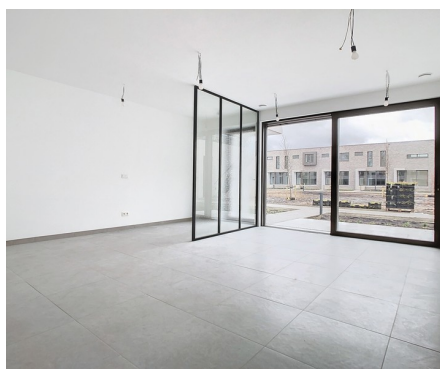
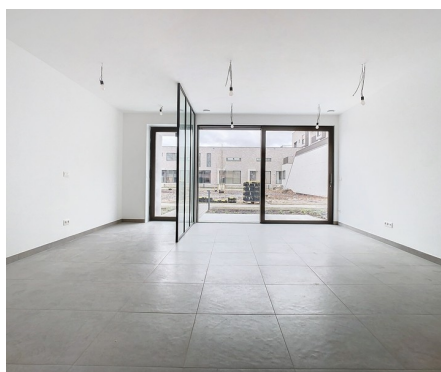


## Flat for rent

Du Roy de Blicquy laan 3E 1933 Sterrebeek

**€ 1.350**

 2  1  91 m<sup>2</sup>  11 m<sup>2</sup>



# Description

Golf course of Sterrebeek (The National) - On the bordure of Tervuren - magnificent apartment of +/- 91m2 in an exceptional environment. The apartment consists of an entrance, a bright living room of +/-37m2 with acces to the south-facing terrace, an open fully equipped kitchen, a laundry/storage room, 2 bedrooms (+/-9,7m2, +/-13,2m2), a bathroom with double wash-basin and shower, separate toilet. Common geothermal pump, videophone, solar screens, cellar, 1 parking space for 100€/month. Provision for common charges: 150€/month. The golf domain offers an exceptional living environment, only 2 steps from all facilities (shops, fitness center with pool in and outdoor, international schools (American, German, BSB)) and public transport (tram 39 Montgomery). Close to the capital, Sterea offers a truly unique lifestyle. Lighting and curtains will be installed. Free as from 01/03/2024!

## Details

### General information

Construction year  
**2023**

State  
**Very good state**

Type of construction  
**Attached**

Terraces  
**1**

Terrace 1  
**11 m²**  
**south**

Parkings inside  
**1**

### Layout

Living room  
**37 m²**

Kitchen  
**Yes (US fully fitted)**

Bedroom 1  
**10 m²**

Bedroom 2  
**13 m²**

Bathroom  
**shower**

Toilets  
**2**

Cellar  
**Yes**

Laundry  
**Yes**

### In the proximity

Environment  
**Central**

Shops at  
**500 m**

School at  
**1.000 m**

Public transport at  
**800 m**

Public transport nearby  
**Yes**

### Dimensions

Habitable surface  
**91 m²**

### Comfort

Handicap friendly  
**No**

Videophone  
**Yes**

Elevator  
**Yes**

Pool  
**No**

### Energy

Windows  
**Vinyl**

Electricity certificate  
**Yes, conform**

Heating  
**Underfloor heating partially**

### Financial

Price  
**€ 1.350 per month**

Costs  
**€ 150 monthly**

Reference  
**Blicquy 3E**

### Spatial planning

Flooding area  
**Not located in flood area**