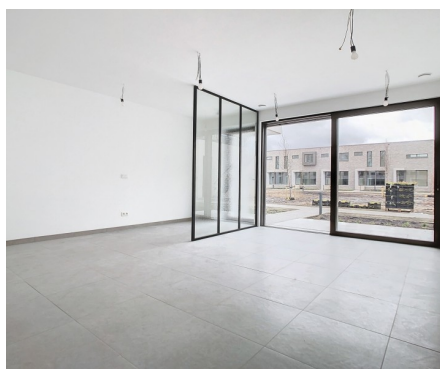
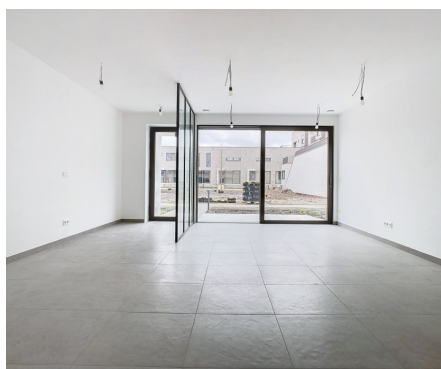


Flat for rent

Du Roy de Blicquy laan 3E 1933 Sterrebeek

€ 1.390

 2  1  91 m²  11 m²



Description

Golf course of Sterrebeek (The National) - On the bordure of Tervuren - magnificent apartment of +/- 91m2 in an exceptional environment. The apartment consists of an entrance, a bright living room of +/-37m2 with acces to the south-facing terrace, an open fully equipped kitchen, a laundry/storage room, 2 bedrooms (+/-9,7m2, +/-13,2m2), a bathroom with double wash-basin and shower, separate toilet. Common geothermal pump, videophone, solar screens, cellar, 1 parking space for 100€/month. Provision for common charges: 150€/month. The golf domain offers an exceptional living environment, only 2 steps from all facilities (shops, fitness center with pool in and outdoor, international schools (American, German, BSB)) and public transport (tram 39 Montgomery). Close to the capital, Sterea offers a truly unique lifestyle. Lighting and curtains will be installed. Free as from 01/03/2024!

Details

General information

Construction year
2023

State
Very good state

Type of construction
Attached

Terraces
1

Terrace 1
11 m²
south

Parkings inside
1

Layout

Living room
37 m²

Kitchen
Yes (US fully fitted)

Bedroom 1
10 m²

Bedroom 2
13 m²

Bathroom
shower

Toilets
2

Cellar
Yes

Laundry
Yes

In the proximity

Environment
Central

Shops at
500 m

School at
1.000 m

Public transport at
800 m

Public transport nearby
Yes

Dimensions

Habitable surface
91 m²

Comfort

Handicap friendly
No

Videophone
Yes

Elevator
Yes

Pool
No

Energy

Windows
Vinyl

Electricity certificate
Yes, conform

Heating
Underfloor heating partially

Financial

Price
€ 1.390 per month

Costs
€ 150 monthly

Reference
Blicquy 3E

Available
Immediately
01 March 2024

Spatial planning

Flooding area
Not located in flood area