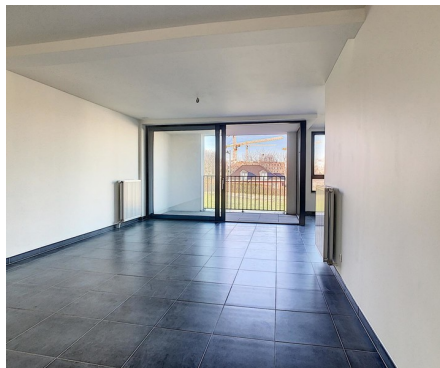


Flat for rent

Chaussée d'Haecht 2042 D2.3 1130 Haren

€ 1.550

 3  1  104 m²  1



Description

Residence NATEAU - Haren (Brussels), just at the border with Diegem - Spacious apartment in a recent building with a large living room, an equipped kitchen, a laundry room, a modern bathroom, a separate toilet and three bright bedrooms. The apartment has 2 large terraces and a closed garage box. Provision common charges: 160€. It is located near shops (Bio Planet, Lidl), schools, NATO, Brussels airport and the main access roads.

Details

General information

Construction year
2019

State
Very good state

Type of construction
Attached

Floor
2

Floors
3

Terraces
2

Garage
Yes

Garages
1

Layout

Living room
35 m²

Kitchen
Hyper equipped

Bedroom 1
14 m²

Bedroom 2
10 m²

Bedroom 3
10 m²

Bathroom
bath

Toilets
1

Laundry
Yes

In the proximity

Environment
Central

Shops at
50 m

School at
100 m

Public transport nearby
Yes

Dimensions

Habitable surface
104 m²

Comfort

Handicap friendly
No

Parlophone
Yes

Elevator
Yes

Pool
No

Energy

Glazing type
Thermic and acoustic isol.

Windows
Aluminium

Electricity certificate
Yes, conform

Heating type
Condensation

Heating
Individual

Financial

Price
€ 1.550 per month

Reference
Nateau C2.3

Available
15 July 2026

Spatial planning

Flooding area
Not located in flood area