


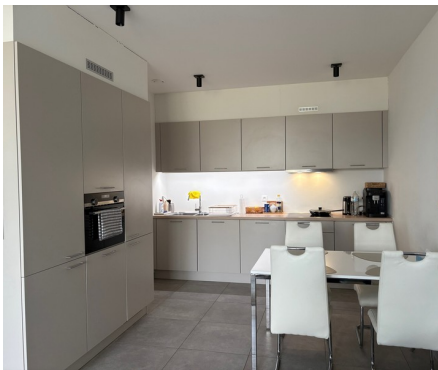


## Duplex for rent

Du Roy de Blicquy laan 5F 3080 Tervuren

**€ 1.450**

 2  1  93 m<sup>2</sup>



# Description

Golf of Sterrebeek (The National) at the limit with Tervuren - Nice duplex of +/- 93m<sup>2</sup> in an exceptional environment consisting of an entrance with cloakroom and guest toilet, a bright living room of +/-25m<sup>2</sup> with a nice view and access to a terrace of +/- 8m<sup>2</sup>, an open fully equipped kitchen, a laundry room. On the 1st floor, 2 bedrooms (+/-12m<sup>2</sup>, +/-13m<sup>2</sup>) one of which has access to a second terrace, shower room with double wash-basin, separate toilet. Videophone, cellar, parking space in the building and 2 bicycle hooks. Provision for common charges: 120€/month. The golf domain offers an exceptional living environment, only 2 steps from all facilities (shops, fitness centre with in and outdoor pool, international schools (American, German, BSB)) and public transport (tram 39 Montgomery). Lighting fixtures and curtains installed. Free from 01/08/2026!

## Details

### General information

Construction year  
**2023**

State  
**Very good state**

Type of construction  
**Attached**

Floor  
**2**

Floors  
**2**

Terraces  
**2**

Parking inside  
**Yes**

Parkings inside  
**1**

### Layout

Living room  
**25 m<sup>2</sup>**

Kitchen  
**Yes (US fully fitted)**

---

Bedroom 1  
**12 m<sup>2</sup>**

Bedroom 2  
**13 m<sup>2</sup>**

Shower rooms  
**1**

Toilets  
**2**

Cellar  
**Yes**

Laundry  
**Yes**

### In the proximity

Environment  
**Central**

Shops at  
**500 m**

School at  
**1.000 m**

Public transport at  
**800 m**  
**5.000 m**

### Dimensions

Habitable surface  
**93 m<sup>2</sup>**

### Comfort

Handicap friendly  
**No**

Videophone  
**Yes**

Elevator  
**No**

Pool  
**No**

### Energy

EPC  
**52 kWh/m<sup>2</sup>**

Electricity certificate  
**Yes, conform**

Heating type  
**Hot air pump**

Heating  
**Collective**

### Financial

Price  
**€ 1.450 per month**

Costs  
**€ 120 monthly**

Reference  
**Blicquy 5F**

Available  
**Tbd with the tenant**  
**01 August 2026**

### Spatial planning

Flooding area  
**Not located in flood area**