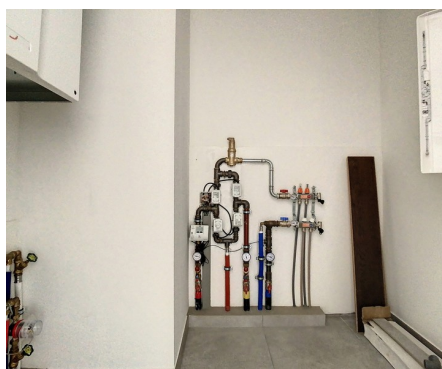
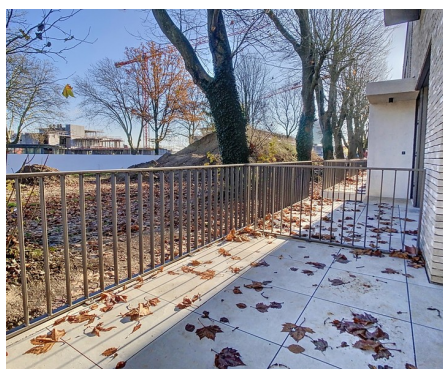
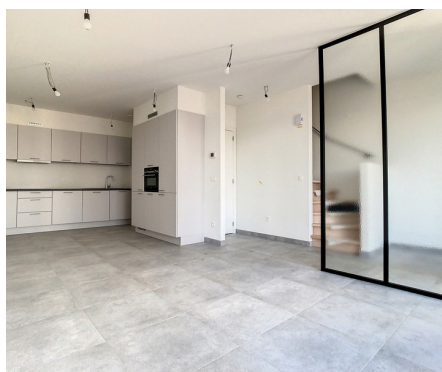
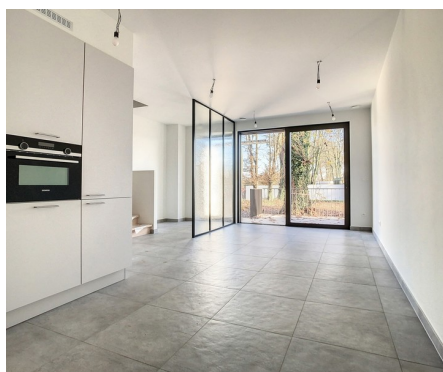


Duplex for rent

Du Roy de Blicquy laan 5E 3080 Tervuren

€ 1.390

 2  1  92 m²  8 m²



Description

Golf course of Sterrebeek (The National) - At the limit with Tervuren. Nice duplex of +/- 92m2 in an exceptional environment. The apartment consists of an entrance with cloakroom and guest toilet, a bright living room of +/-25m2 with a nice view and access to a east facing terrace of +/- 8m2, an open fully equipped kitchen, a laundry room, 2 bedrooms one of which has access to the private terrace (+/-12,5m2, +/-12,5m2), bathroom with double wash-basin and shower, seperate toilet.videophone, cellar, parking space in the building for 100€/month, 2 bicycle hooks. Provision for common charges: 150€/month. The golf domain offers an exceptional living environment, only 2 steps from all facilities (shops, fitness centre with pool in and outdoor, international schools (American, German, BSB)) and public transport (tram 39 Montgomery). Close to the capital, Sterea offers a truly unique lifestyle. Lighting, rods and a built-in closet will be installed. The apartment is available.

Details

General information

Construction year
2023

State
Very good state

Type of construction
Attached

Floors
2

Terraces
2

Terrace 1
8 m²

Parkings inside
1

Layout

Living room
25 m²

Kitchen
Yes (US fully fitted)

Bedroom 1
13 m²

Bedroom 2
13 m²

Bathroom
shower

Toilets
2

Cellar
Yes

Laundry
Yes

In the proximity

Environment
Central

Shops at
500 m

School at
1.000 m

Public transport at
800 m

Public transport nearby
Yes

Dimensions

Habitable surface
92 m²

Comfort

Handicap friendly
No

Videophone
Yes

Elevator
Yes

Pool
No

Energy

Windows
Vinyl

Electricity certificate
Yes, conform

Heating type
Gas

Heating
Underfloor heating partially

Financial

Price
€ 1.390 per month

Costs
€ 150 monthly

Reference
Blicquy5E

Available
01 March 2025

Spatial planning

Flooding area
Not located in flood area