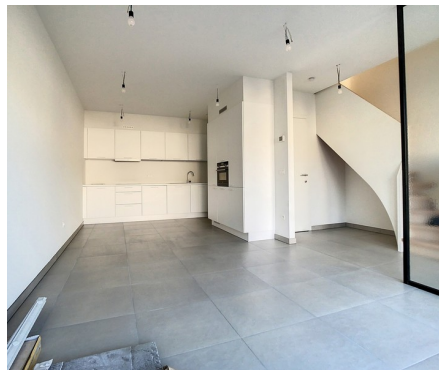


Duplex for rent

Du Roy de Blicquy laan 5T 1933 Sterrebeek

€ 1.475

 2  1  99 m²  10 m²



Description

Sterrebeek Golf "The National" – On the border of Tervuren. Beautiful duplex apartment set in an exceptional environment, offering approximately 99 m² of living space. The property comprises an entrance hall with cloakroom and guest toilet, a bright living room of approximately 25 m², a fully equipped open-plan kitchen, two bedrooms, one of which has direct access to the private terrace (approx. 12.5 m² and 12.6 m²), a spacious shower room with a double washbasin vanity unit and walk-in shower, and a separate toilet. The apartment features geothermal heating, solar screens, a video intercom system, a private cellar, and two underground parking spaces, all included in the rent. Monthly provision for charges (heating and communal charges): €100/month. The golf estate offers an exceptional living environment close to all amenities, including shops, the David Lloyd fitness club with indoor and outdoor swimming pools, international schools (American, German and BSB), and public transport (tram 39 to Montgomery). Located just minutes from Brussels, Sterrea offers a truly unique lifestyle. Lighting fixtures and curtains are included. Available from 1 September 2026.

Details

General information

Construction year
2023

State
Very good state

Type of construction
Attached

Floors
2

Terraces
1

Terrace 1
10 m²
west

Parkings inside
2

Layout

Living room
25 m²

Kitchen
Yes (US fully fitted)

Bedroom 1
13 m²

Bedroom 2
13 m²

Bathroom
shower

Toilets
2

Cellar
Yes

Laundry
Yes

In the proximity

Environment
Central

Shops at
500 m

School at
1.000 m

Public transport at
800 m

Public transport nearby
Yes

Dimensions

Habitable surface
99 m²

Comfort

Handicap friendly
No

Videophone
Yes

Elevator
Yes

Pool
No

Energy

Windows
Vinyl

Electricity certificate
Yes, conform

Heating type
Gas

Heating
Underfloor heating partially

Financial

Price
€ 1.475 per month

Costs
€ 100 monthly

Reference
Blicquy 5T

Available
01 September 2026

Spatial planning

Flooding area
Not located in flood area