


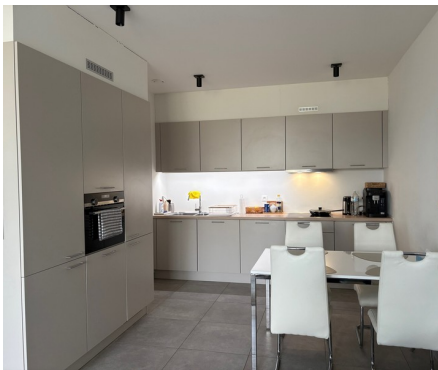


Duplex for rent

Du Roy de Blicquy laan 5F 1933 Sterrebeek

€ 1.450

 2  1  93 m²



Description

Golf of Sterrebeek (The National) at the limit with Tervuren - Nice duplex of +/- 93m² in an exceptional environment consisting of an entrance with cloakroom and guest toilet, a bright living room of +/-25m² with a nice view and access to a terrace of +/- 8m², an open fully equipped kitchen, a laundry room. On the 1st floor, 2 bedrooms (+/-12m², +/-13m²) one of which has access to a second terrace, shower room with double wash-basin, separate toilet. Videophone, cellar, parking space in the building and 2 bicycle hooks. Provision for common charges: 120€/month. The golf domain offers an exceptional living environment, only 2 steps from all facilities (shops, fitness centre with in and outdoor pool, international schools (American, German, BSB)) and public transport (tram 39 Montgomery). Lighting fixtures and curtains installed. Free from 01/08/2026!

Details

General information

Construction year
2023

State
Very good state

Type of construction
Attached

Floor
2

Floors
2

Terraces
2

Parking inside
Yes

Parkings inside
1

Layout

Living room
25 m²

Kitchen
Yes (US fully fitted)

Bedroom 1
12 m²

Bedroom 2
13 m²

Shower rooms
1

Toilets
2

Cellar
Yes

Laundry
Yes

In the proximity

Environment
Central

Shops at
500 m

School at
1.000 m

Public transport at
800 m
5.000 m

Dimensions

Habitable surface
93 m²

Comfort

Handicap friendly
No

Videophone
Yes

Elevator
No

Pool
No

Energy

EPC
52 kWh/m²

Electricity certificate
Yes, conform

Heating type
Hot air pump

Heating
Collective

Financial

Price
€ 1.450 per month

Costs
€ 120 monthly

Reference
Blicquy 5F

Available
Tbd with the tenant
01 August 2026

Spatial planning

Flooding area
Not located in flood area